



Marcon International, Inc.

NEWSLETTER

Winter 2020

Phone: (360) 678-8880
Fax: (360) 678-8890

Website: www.marcon.com
Email: info@marcon.com

Tank Barge Market Update

As of November 2019, of the 3,681 barges and 13,519 vessels we currently track, 680 are tank barges with 27 inland and 25 ocean or coastal barges officially on the market for sale. Two of the 25 inland barges are 10 years of age or less. Eleven or 40.7% of the inland barges are at least 25 years old. The oldest inland tank barge listed today is a 76 year old, 9,000BBL tank barge previously used for transporting #2 oil in the U.S. Great Lakes. This old lady is counterbalanced by two U.S.-flagged 2009-built 1,600mt capacity tank barges located on the U.S. Gulf Coast. Eight double hull inland barges listed in the Americas from 11,066-28,000BBL capacity were built after 2005. One year ago, 31 inland barges were available with an average age of 26 years and five years ago, 35 inland barges were available with an average age of 30 years. The inland barges currently available for sale average 23 years old. Excess barges continue to sit on the market, however, we know of continued scrapping of older units.

Of the 25 ocean/coastal barges, six are 10 years of age or less. Twelve or 48.0% of the ocean & coastal barges are at least 25 years old with the oldest one, a U.S. flagged, double-hull, 119,000BBL barge, built in 1970 and retrofitted in 2006. This is countered by a 2016 built U.S. flagged 82,000BBL double hull barge. In November 2014, 42.1% of the 38 ocean and coastal barges listed for sale were 25 years of age or over, with the oldest barge being a 1961-built 30,000BBL barge in the U.S. Today, 13 fewer ocean/coastal barges are officially available for sale compared to five years ago and six fewer from one year ago, although we expect to see another 140,000bbl coiled, double hull black oil tug & barge unit coming on the market in May 2020 after it completes its current contract. Average age of all ocean/coastal barges for sale today is 25 years old (1994), compared to 23 years both last year (1995) and five years ago (1991). The closeness in average age suggests that while older barges have been disposed of, relatively younger units are coming onto the market for sale.

Twenty inland tank barges which Marcon has today listed for sale are located in the U.S., followed by four in Europe and one each in Africa, Latin America and location unknown. Eighteen ocean / coastwise barges listed for sale are in the U.S., followed by four in Southeast Asia and one each location unknown, Latin America and the Mid East. Thirty-seven of the 52 tank barges listed for sale worldwide are double hull. Twenty-eight of these are U.S. flag of which three are three to ten years old, 14 are 11-25 years old and the remaining 11 barges are 26-54 years of age. The foreign double-hull barges range from six years old in Southeast Asia up to 39 years old in Latin America.

Marcon has several US and foreign flagged tank barges for sale but there has not been much appetite for the prices offered against the requirements of the Buyers. There have been many purchase requirements for storage jobs outside of the USA, but it generally appears that these jobs will not have the revenue potential to cover the expected selling prices to satisfy the Sellers. The ocean / coastal market generally remains in a situation of 'over tonnage' with too many barges and not enough work. Marcon has some 80,000BBL clean D/H, 120,000BBL D/H and larger dirty barges (foreign and domestic) not receiving

(Continued on page 14)

Featured Vessels



CB09026
Crew Boat



DR05424
Dredge



LC13433
Landing Craft



RV23142
Research Vessel



UB11058
Utility Boat

Past Newsletters available in PDF format at www.marcon.com

Tugboats	2-4
Push Boats	5
Deck Barges	5-6
Derrick Barges	6
Misc. Barges	6
Hopper Barges	6
Tankers/ Tank Barges	7
Supply Boats	7-9
Utility Boats	9-10
Crew Boats	10-11
Landing Crafts	11-12
Passenger	12
Research/Dive	12

For more extensive listings of Vessels and Barges, including photos, surveys, drawings, etc., visit our website at www.marcon.com



Vessels for Sale & Charter Tug Boats

File	Dimensions	Machinery	HP	Built	Price(\$)
> TG00822	22x8x4	1xJohn Deere	80	-	Request
> TG01025	26x8x4	1xJohn Deere	120	-	Request
+ TG01220	20x-x3	1xGM4-53	120	16R	Charter
> TG02032	32x10x5	1xCAT	-	New	Quote
+ TG03000	25x11x5	1xGM6-71	310	10R	Charter
+ TG03034	34x14x6	1xGM8V92	312	15R	Charter
> TG03042	39x13x6	1x-	-	New	Quote
+ TG03226	26x11x6	1xKomatsu	325 K	07R	Request
+ TG03645	45x14x7	1xCAT343	365	68	Charter
+ TG05046	46x15x6	2xGM8V71	500	69	Request
> TG06557	57x20x8	1xPoyaud	650	-	Request
> TG07074	72x22x10	2xCummins	700	17	Request
> TG07474	75x20x12	2xGM	746	66	Request
> TG08017	49x17x8	2xDoosan	800	New	Quote
> TG08042	42x16x9	2xDoosan	800 K	New	Quote
> TG08048	47x18x7	2xCummins	800	67	Request
> TG08053	66x22x10	2xCAT3406	800	97	Request
> TG08069	66x20x9	2xCummins	800	04	Request
> TG09049	49x27x10	2xCATC18	938 Z	New	Quote
★ TG09071	70x21x10	2xGM16V71	910	51	Request
+ TG09538	40x15x9	2xGM Series 60	950	05R	Request
+ TG10059	58x23x9	3xGM12V71	1020	58	Request
+ TG10060	60x17x6	3xCummins	1050	88R	Request
> TG10072	75x22x12	2xCummins	1000 K	02	Request
> TG11050	49x27x10	2xCATC18	1120 K	New	Quote
+ TG11056	56x16x5	3xCATD343	1095	48	Request
> TG12039	54x18x8	2xCATC18	1200 K	11	Request
> TG12050	54x18x8	2xCATC18	1200 K	11	Request
> TG12084	77x24x10	2xCummins	1280	19	Request
> TG12144	87x24x11	2xRuston	1200 T	67	Request
> TG12864	64x21x9	2xCummins	1280 K	96	Charter
> TG13084	77x24x10	2xYanmar	1300	17	Request
> TG13113	77x24x10	2xYanmar	1300	-	Request
+ TG14087	72x20x6	2xCAT3508	1550	94R	Request
> TG14100	92x36x11	2xCAT3412	1440 K	12	Request
> TG14114	78x28x11	2xJinan	1500	08	Charter
+ TG14580	80x22x7	2xCATD348	1450	70	Request
+ TG15002	87x24x10	1xEMD12-645	1500 K	43	Request
> TG15088	84x-x11	1xBolnes	1500	13R	Charter
> TG16045	85x26x12	2xYanmar	1658 K	-	Request
+ TG16075	75x23x12	2xCATD398	1700	80	Request
> TG16081	56x22x9	2xDoosan	1600 K	New	Quote
> TG16582	82x25x12	2xYanmar	1658 K	07	Request
> TG16855	56x25x10	2xYanmar	1658 K	19	Quote
+ TG17062	93x26x10	2xCATD398	1700	58	Request
> TG17079	79x27x11	1xAlpha	1280	77	Request
+ TG18053	92x36x8	3xCATC18	1800	11	Request

Listings Updated Daily On Internet

File	Dimensions	Machinery	HP	Built	Price(\$)
+ TG18058	92x36x8	3xCATC18	1800	10	Request
> TG18110	88x24x12	2xGM16V149	2000	09R	Request
> TG18193	94x28x14	2xStork	1800	81	Charter
+ TG19003	100x27x12	2xEMD8-645	1900 K	66	Request
+ TG19060	60x23x10	2xCAT3508	1920 K	19R	Request
> TG19061	60x23x10	2xCAT3508	1920 K	03	Request
> TG19066	60x23x10	2xCAT3508	1920 K	98	Request
> TG19067	60x22x8	2xCAT3508	1920 K	99	Request
> TG19068	60x23x10	2xCAT3508	1920 K	99	Request
> TG19070	60x23x10	2xCAT3508	1920 K	01	Request
> TG19071	60x23x10	2xCAT3508	1920 K	03	Request
> TG19077	60x24x10	2xCAT3508	2200 K	New	Quote
> TG19259	60x22x8	2xCAT3508	1920 K	01	Request
> TG20033	89x30x14	2xYanmar	2000 K	14	Request
> TG20057	98x28x14	2xMitsubishi	2036 K	07	Request
TG20060	64x24x11	2xMTU	2000 K	20	Request
> TG20085	79x30x12	2xYanmar	2008 Z	19	Request
> TG20136	84x30x12	2x-	2000 K	New	Quote
> TG20163	85x26x12	2xMitsubishi	1516 K	12	Request
> TG20178	123x30x14	2xYanmar	2000 K	84	Request
> TG20183	96x30x14	2xMitsubishi	2000 K	-	Request
> TG20184	104x28x14	2xYanmar	2000 K	14	Request
+ TG21001	98x25x14	1xEMD12-645	2150	52	Request
+ TG21006	98x25x13	1xEMD12-645	2150	53	Request
> TG21072	72x24x12	2xCummins	2100 K	95	Charter
> TG21074	74x24x12	2xCummins	2100 K	95	Request
> TG21488	89x22x10	2xDeutz-MWM	2145	71	Request
> TG22099	99x28x14	2xYanmar	2276 K	17	Request
> TG22108	80x26x14	2xCATD399	2400	82	Request
+ TG22115	115x31x16	1xCAT3606	2475 K	65	Request
> TG22142	85x30x12	2xCAT3508	2230	11	Charter
+ TG22590	90x30x14	2xCATD399	2250 K	93R	Request
> TG24058	92x33x16	2xYanmar	2400 Z	14	Request
> TG24071	102x28x14	2xCummins	2400 K	17	Request
> TG24075	75x26x12	2x-	2400 K	New	Quote
> TG24147	95x30x14	2xYanmar	2400 K	99	Request
★ TG24161	100x27x12	2xCAT3512	2400	68	Request
> TG25190	98x43x12	3xCAT3412	2550 K	10	Charter
> TG26058	59x28x11	2xCATC32	2600 Z	19	Request
> TG26059	59x28x11	2xCATC32	2600 Z	19	Request
> TG26061	61x30x11	2xCATC32	2600 Z	New	Quote
+ TG26101	100x25x11	2xGM16V149	2800	08R	Request
+ TG26106	108x26x12	2xCAT3512	3000	84R	Request
★ TG28007	103x27x12	2xCAT3516	3100 K	84R	Charter
+ TG28012	121x32x16	1xEMD16-645	2800	65	Request
TG28081	82x28x11	2xMitsubishi	2800 K	07R	Charter
> TG28131	95x28x13	2xYanmar	2800	95	Request
> TG28193	95x28x14	2xYanmar	2800	95	Request
> TG28194	95x28x13	2xYanmar	2800	96	Request
> TG28210	109x32x16	2xRuston	2820 K	80	Charter
★ TG29031	96x32x16	1xEMD16-645	3000 K	79	Request

R = Rebuilt

See www.marcon.com for more listings.

Details believed correct, not guaranteed. Offered subject to prior sale or charter.



Tug Boats, Continued

File	Dimensions	Machinery	HP	Built	Price(\$)
+ TG29122	122x32x16	1xEMD16-645	2850	66	Request
+ TG29124	122x32x16	1xEMD16-645	2875	66	Request
> TG30036	118x35x16	2xZibo	3000 K	19	Request
> TG30051	96x28x14	2xGM12-645	3000	71	Request
★ TG30069	111x30x10	2xAlco	3000	71	Request
> TG30096	89x30x12	2xCAT3512	3000 K	12	Request
★ TG30116	116x32x16	2xEMD12-645	3000 K	76	Request
+ TG30151	126x34x16	2xEMD12-645	3000 K	77	Request
+ TG30178	111x30x16	2xEMD12-645	3000 K	75	Request
> TG30234	74x29x13	2xMTU	3057 K	11	Request
★ TG30396	96x32x16	1xEMD16-645	3000 K	79	Request
TG31030	105x30x14	2xCAT3516	3250 K	81	Request
> TG31124	121x37x16	2xCAT3512	3150 K	18R	Charter
> TG32026	112x35x16	2xZibo	3200 K	09	Request
> TG32027	112x35x16	2xZibo	3200 K	07	Request
> TG32034	104x30x14	2xCummins	3200 K	15	Request
> TG32038	105x30x14	2xCummins	3200 K	07	Charter
> TG32042	102x31x14	2xCummins	3200 K	08	Charter
> TG32070	98x32x16	2xCummins	3200 Z	18	Request
> TG32087	88x26x12	2xCummins	3200 K	03	Charter
> TG32092	88x26x12	2x-	3200 K	New	Quote
> TG32117	110x36x16	2xNiigata	3200 Z	80	Request
> TG32131	121x35x16	2xCummins	3200 K	New	Quote
> TG32138	98x35x15	2xCummins	3200 Z	New	Quote
> TG32147	100x32x16	2x-	3200 Z	New	Quote
> TG32150	112x36x16	2xCummins	3200 K	19	Request
> TG32170	105x30x14	2xCummins	3600 K	07	Request
> TG32198	105x30x14	2xCummins	3200 K	08	Request
> TG32202	97x30x14	2xCummins	3200 K	10	Request
> TG32246	114x32x14	2xNiigata	3200 Z	75	Request
★ TG33012	125x34x13	2xEMD16-567	3300	56	Request
> TG34086	100x35x14	2xWartsila	3200 Z	94	Request
> TG34088	105x35x15	2xWartsila	3200 Z	94	Request
> TG34197	98x31x13	2xDaihatsu	3300 Z	85	Request
> TG35103	105x32x17	2xBlackstone	3500 K	72	Request
> TG36067	102x31x14	2xCummins	3600 K	10	Request
> TG36092	92x32x16	2x-	3600 Z	New	Quote
+ TG36094	95x38x13	2xB&W	3200 Z	90	Request
> TG36144	85x31x16	2x-	3600 Z	19	Request
> TG36153	118x37x16	2x-	3600	New	Quote
> TG36168	96x32x16	2xYanmar	3600 Z	11	Request
> TG36189	96x32x16	2xYanmar	3600 Z	11	Request
> TG36190	121x37x16	2xCummins	3600 K	10	Request
> TG36197	95x30x15	2xNiigata	3600 Z	04	Request
> TG36198	95x30x15	2xNiigata	3600 Z	04	Request
> TG37070	76x36x14	2xCAT3512	3750 Z	18	Request
> TG37071	76x36x14	2xCAT3512	3750 Z	18	Request
> TG37073	74x36x14	2xCAT3512	4000 Z	New	Quote
> TG37075	76x36x14	2xCAT3512	3750 Z	18	Request

K = Kort

Z = Azimuthing

T = Tractor

Featured Vessels & Barges For Sale



File: [TG18053](#) / [TG18058](#) Tug - Triple Screw (Two Available): 92.0' x 36.0' x 8.5'. **Built in 2011/2010**, respectively, by Fred Wahl SY; OR. U.S. flag. GRT: 165. Special Survey due 04/2021 & 06/2020, respectively. FO: 23,000g. FW: 2,000g. BW: 25,000g. Crane: Palfinger PL12000 MB. Winch: Markey TES-22 Single Drum; 2 - 60T Nabrico Face. Wire: 1,500' x 1.375". M/Es: 3 x CAT C18 total **1,800BHP**. 3 - 50" FP props. Tier 2 / Acert. **Bollard Pull: 16.5T**. Gensets: 2 - 99kW / CAT C4.4; 1 - 30kW / CAT C2.2. Quarters: 10 bunks / 3 heads. Air-Con. **Shallow draft arctic tugs with ABS Ocean Loadline.** Push knees forward. Tunneled stern for propellers. Steel hull, aluminum house. King River Class. Water maker. Tier II M/Es and generators. Fuel centrifuge. MSD for up to 12 persons. Markey electric bow winch with 2" plasma line. Markey TES-22 electric towing winch with galvanized 1,500' x 1.375" wire. 12,000 lbs. Palfinger deck crane. 12 man Pro Zodiac. 2 Nabrico 60 ton make-up winches. Sat phone. Flir camera.

File: [DB20560](#) Deck Barge - Ocean: 205.0' x 60.0' x 13.0'. **Built in 2016** by C&C Marine; LA. U.S. flag. GRT: 1,137. NRT: 341. ABS Ocean L/L. S/S due 07/2021. Built to Ice Class B0, but not certified. **Dwt: 2,316mt. 9,700ft2 clear deck. Deck Load: 2,500lb/ft2.** 3,000lb anchors. Wire/Chain: 1.25". Windlass: Coastal brand. Gensets: CAT 99kW. **Designed for general cargo, containers and aggregate.** 50'x20' Stern Ramp / 100ST capacity. Ramp weight 75,000lbs. Ramp powered by Dual Lantec Hydraulic Winches. 4 spud wells; 2 x 60'x48" spuds. Oak wooden wear deck. CAT 99kW HPU. Coastal electric bow capstan. 3,159BBL "D" fuel oil tank capacity. Two optional newly rebuilt Manitowoc 390 triple drum winches designed for the barge, but not installed. Winches can be sold with the barge (at extra cost) or separately.

Tugs and barge exclusively available for sale or charter, separately or en-bloc, through Marcon International. Inspection: U.S. Northwest.

+ Located West Coast

★ Located East Coast

> Foreign Flag



Tug Boats, Continued

File	Dimensions	Machinery	HP	Built	Price(\$)	File	Dimensions	Machinery	HP	Built	Price(\$)
> TG37076	76x36x14	2xCAT3512	3750 Z	18	Request	> TG51081	80x37x14	2xCAT3516	5630 Z	New	Quote
> TG37077	76x36x14	2xCAT3512	3750 Z	18	Request	> TG51111	98x39x18	2xCAT3516	5150 Z	18	Request
> TG37115	115x49x13	3xMitsubishi	3778 K	11	Charter	> TG51125	120x38x17	2xCAT3516	5150	10	Charter
> TG37116	115x49x13	3xMitsubishi	3782 K	16	Charter	> TG51158	158x48x16	2xCAT3516	5150 K	15	Request
> TG38012	122x34x17	1xMAK	3800 K	80	Charter	> TG51163	164x41x19	2xCAT3516	5150 K	16	Request
> TG38104	103x38x20	2xCAT3512	3822 K	New	Quote	> TG52098	98x39x18	2xYanmar	5200 Z	19	Request
+ TG39002	139x34x17	2xEMD16-645	4200	00R	Request	> TG52132	134x46x23	4xWartsila	5245	93R	Request
★ TG39009	109x31x16	2xEMD16-645	3900	75	Request	> TG53082	80x37x14	2xCAT3516	5364 Z	New	Quote
TG39108	105x34x17	2xEMD16-645	4200	84	Charter	> TG53138	102x36x18	2xCAT3516	5364 Z	19	Request
★ TG39133	127x31x13	2xEMD16-645	3900	70	Request	> TG53600	101x37x17	2xCAT3516	5361 Z	10	Request
+ TG39137	118x34x17	2xEMD16-645	3900 K	76	Request	> TG53601	105x38x18	2xCAT3516	5364 Z	19	Request
> TG39145	144x34x16	2xStork	4000 K	10R	Charter	> TG54091	93x41x17	2xCAT3512	4733 Z	New	Quote
★ TG39147	105x36x13	2xEMD16-645	3900	69	Request	> TG54092	92x41x17	2xCAT3516	5364 Z	New	Quote
> TG39151	103x30x14	2xEMD16-645	3900	12R	Request	> TG56076	83x39x15	2xCAT3516	5630 Z	20	Request
+ TG40124	124x32x16	2xEMD16-645	3900 K	07R	Charter	> TG56101	102x36x18	2xCAT3516	5264 Z	19	Request
> TG40130	115x30x13	2xCAT3606	4000	98	Request	★ TG56129	130x35x19	2xEMD16-645	5750	69	Request
> TG40145	140x39x17	2x-	4000 K	New	Quote	★ TG57107	107x27x12	2xEMD16-645	5700	81R	Request
> TG40162	162x37x20	2xMAK	3550 K	71	Charter	> TG57116	115x30x15	2xEMD16-645	5600	69	Request
★ TG40174	101x34x18	2xAlco	4000	00	Request	TG57127	127x37x21	2xEMD16-645	5750	81	Request
> TG40175	128x34x16	2xCAT3516	4000 K	01	Request	> TG60101	101x36x14	2xMitsubishi	6080 K	09	Charter
> TG40226	116x32x14	2xDaihatsu	4000 Z	01	Request	★ TG60110	110x41x16	3xWartsila	6000 K	87	Charter
> TG40230	121x37x16	2xCummins	3600 K	13	Request	> TG60112	112x36x16	2xMitsubishi	6080	13	Charter
TG41001	121x34x19	2xAlco	4100	03R	Request	> TG60170	170x49x21	2xMitsubishi	6000 K	16	Request
+ TG41121	121x34x13	2xAlco	4100	76	Request	TG61012	127x37x20	2xEMD16-645	6140	94	Request
+ TG42102	106x34x17	2xAlco	3800	81	Request	TG61125	135x36x19	2xEMD16-645	6140 K	97	Request
> TG43122	120x37x18	2xWartsila	4800 K	05	Request	TG61128	127x37x20	2xEMD16-645	6140	79	Request
> TG44076	107x38x17	2xCAT3516	4400 Z	18	Request	TG61133	127x37x20	2xEMD16-645	6140	98R	Request
> TG44124	125x37x16	2x-	4400 K	New	Quote	> TG63080	80x37x14	2xCAT3516	5364 Z	New	Quote
> TG44125	115x35x15	2x-	4400	New	Quote	> TG63090	94x41x12	2xCAT3516	6770 Z	New	Quote
> TG44136	131x39x15	2xCummins	4400 K	16	Request	TG63110	110x42x19	2xCAT3516	6300 Z	09	Request
> TG44164	164x41x19	2xCummins	4400 K	10	Request	TG63111	110x42x19	2xCAT3516	6300 Z	09	Request
> TG45013	128x35x16	2xNiigata	4500 K	19	Request	> TG65000	105x43x20	-x-	6850 Z	New	Quote
★ TG45111	115x38x20	2xCAT3516	4600	04	Request	> TG67015	105x43x18	2xCAT3516	6770 Z	20	Request
> TG47082	80x37x14	2xCAT3512	4733 Z	New	Quote	> TG67099	99x43x18	2xCAT3516	6772 T	New	Quote
> TG47086	83x39x14	2xCAT3512	4734 Z	New	Quote	+ TG67112	110x40x18	2xWartsila	6700 Z	11R	Request
> TG47087	83x39x15	2xCAT	5100 Z	New	Quote	> TG70136	135x38x20	2xEMD20-645	7200 K	01R	Request
> TG47118	118x35x18	2xYanmar	4635	04	Request	TG71096	96x35x22	2xAlco	7130	79	Request
> TG48074	76x36x14	2xCAT3512	4800 Z	20	Request	> TG72108	105x39x18	2xABC	7200 Z	10	Charter
> TG48079	83x39x15	2xWartsila	4828 Z	16	Request	> TG72109	109x42x18	2xABC	7200 Z	09	Charter
> TG48102	105x38x18	2xWartsila	4827 Z	09	Request	> TG73111	112x48x20	-x-	7300 Z	New	Quote
> TG48283	83x39x15	2xWartsila	4827 Z	16	Request	> TG78217	167x49x21	2xGE12V228	7820 Z	09	Request
> TG48284	83x39x15	2xWartsila	4828 Z	16	Request	TG80158	150x48x21	3xEMD	8000 K	00	Request
> TG48286	83x39x15	2xWartsila	4827 Z	16	Request	> TG99022	192x49x25	2xMAN	19000 K	06	Charter
> TG48287	83x39x15	2xWartsila	4827 Z	16	Request	> TG99213	213x61x28	4xMAK	19000 K	07	Charter
> TG49130	105x42x18	2xNiigata	4930 Z	12	Request	> TG99214	213x61x28	4xMAK	19000 K	07	Charter
> TG49131	105x42x18	2xNiigata	4930 Z	12	Request	> TG99243	244x61x31	4xMAK	24480 K	09	Charter
> TG50098	94x34x16	2xCAT3516	5000 Z	16	Charter	> TG99250	244x61x31	4xMAK	24480 K	09	Charter
TG50121	126x34x13	2xEMD16-645	6140 K	85R	Request	> TG99291	292x69x32	4xMAK	24480 K	16	Charter
> TG50185	105x39x18	2xNiigata	5220 Z	17	Request	> TG99292	292x69x32	4xMAK	24480 K	16	Charter
						> TG99293	292x69x32	4xMAK	24480 K	16	Charter
						> TG99294	292x69x32	4xMAK	24480 K	16	Charter

K = Kort

Z = Azimuthing

T = Tractor

R = Rebuilt

See www.marcon.com for more listings.

Details believed correct, not guaranteed. Offered subject to prior sale or charter.



Push Boats

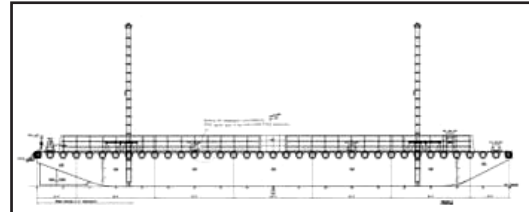
File	Dimensions	Machinery	HP	Built	Price(\$)
TP07011	55x20x8	2xGM12V71	680	71	Request
TP07065	65x18x6	2xCummins	700	71	Request
TP10064	56x22x8	2xCummins	1000	78	Request
+ TP12073	74x21x5	2xCummins	1320 Z	04R	Request
TP12102	75x24x10	2xMitsubishi	1200	66	Request
★ TP12103	58x28x7	2xCATC18	1200	14	Request
★ TP12104	58x28x7	2xCATC18	1200	16	Request
★ TP13055	55x22x8	2xCummins	1320	13	Request
TP13063	65x26x8	2xCummins	1280	97	Request
TP14559	59x20x8	2xCATD348	1450	02R	Request
TP15057	56x24x8	2xCummins	1500	19	Request
TP15061	60x24x8	2xCummins	1500	20	Quote
TP16070	70x26x7	2xCAT3508	1600	71	Request
TP18099	75x24x10	2xCummins	1800	66	Request
TP18105	99x32x10	2xEMD8-645E2	1800	76	Request

Deck Barges

File	Dimensions	Remarks	Built	Price(\$)
DB04018	40x10x5	Sectional	New	Quote
★ DB06024	60x24x4	Inland Spud	90	Charter
+ DB09998	99x99x10	Inland	07	Charter
★ DB10196	101x96x18	Inland	73	Request
+ DB10570	105x70x12	Inland	43	Request
+ DB10626	106x26x8	Inland	-	Request
> DB10794	108x60x10	Ocean Spud	11R	Request
DB11036	110x30x7	Inland	07R	Request
★ DB11038	110x34x8	Inland	-	Request
+ DB11039	110x34x11	Inland	44	Request
★ DB11049	110x32x8	Inland	69	Charter
★ DB11054	110x30x7	Inland	78	Charter
★ DB11055	110x30x7	Inland	-	Charter
★ DB11074	110x30x8	Inland Spud	16	Charter
★ DB11075	110x30x8	Inland Spud	16	Charter
> DB11932	120x33x10	Ocean	-	Request
> DB11934	119x34x9	Inland	45	Request
DB12013	120x30x7	Inland	99R	Request
+ DB12023	120x30x7	Inland	81	Request
DB12031	120x30x7	Inland	79	Request
★ DB12043	120x32x10	Inland	57	Charter
★ DB12049	120x30x7	Inland	82	Charter
DB12052	120x30x7	Inland	91	Request
★ DB12061	120x30x7	Inland	66	Charter
★ DB12082	120x55x7	Inland Spud	03	Request
★ DB12084	120x55x7	Inland	04	Request
★ DB13042	130x40x12	Inland	90	Request
★ DB13535	135x35x10	Inland	72	Charter
★ DB14036	140x50x10	Coastal Spud	00	Request

Listings Updated Daily On Internet

Featured Vessels & Barges For Sale



File: [TG30096](#) Tug - Twin Screw: 88.6' x 29.8' x 11.8'. Built in 2012 by Damen SY Kozle; NL. Marshall Islands flag. GRT: 167. ABS A1, AMS, ACCU S/S due 07/2023. Dwt: 200mt. Light Disp.: 312mt. FO: 125m³. FW: 30m³. Crane: Heila 5.3mt @ 18.03m. Winch: Double-drum R-AHW-H-1000. Line Pull: 100mt. Wire: 650m x 40mm, 400m x 40mm. M/Es: 2 x CAT 3512C total **3,000BHP**. 2 - FP props. Kort nozzles. Approx. 8,950 hours on M/Es. Bowthruster 200HP. **BP: 39.4mt**. Speed about 11.9kn. Gensets: 2 - CAT C4.4TA / 85.5kVA 50Hz 3ph. 7 in 5 cabins. Damen Shoalbuster 2709 AHT. Recently drydocked and class renewed with switch to ABS (formerly BV).

File: [DB18075](#) Deck Barge - Ocean: 180.0' x 60.0' x 13.0'. Built in 2007 by Nass Marine Svcs Bahrain. Bahrain flag. GRT: 980. NRT: 294. ABS. S/S due 03/2023. **Dwt: 2,298mt**. Lt Displ: 513mt. **Deck Load: 15mt/m²**. Bulkheads: 2 longs, 6 transverse. Anchor. **Ocean deck spud barge with bin walls**. Double rakes. 4 spud wells. 14mm deck. 10mm bottom.

Owners plan to reposition the tug and barge the Gulf of Mexico on a heavy-lift vessel during the 1st quarter of 2020 and both will be available for sale upon arrival.
Contact: John Braden (braden@marcon.com / 360-678-8880).



File: [TP15057](#) Push Boat: 56.0' x 24.0' x 8.0'. Built in 2019. Built at U.S. Y. U.S. flag. GRT: 90. Uninsp. Towing Vessel Exam. FO: 8,000g. Winch: 2 - 40T Wintech electric. M/Es: 2 x Cummins QSK-19-M total **1,500BHP**. 2 - 52"x41" FP props on 4.5" shafts. Fernstrum coolers. Gensets: 2 - 40kW / John Deere MDDCA. Quarters: 2 + 2. **New twin screw, inland river pushboat**. 1/2" hull with 3/16", 3-1/2 deck superstructure. **Four flanking & two main rudders** with follow-up lever controls. Schuyler rubber tow knees. Insulated quarters. **U.S. Midwest**.

+ Located West Coast ★ Located East Coast > Foreign Flag



Deck Barges, Continued

File	Dimensions	Remarks	Built	Price(\$)
★ DB14042	140x40x9	Inland	68	Request
DB14058	140x54x9	Ocean	08	Request
★ DB14062	140x48x9	Ocean Spud	03	Request
DB14854	140x54x9	Ocean Spud	06	Request
★ DB15032	150x32x10	Inland	57	Charter
+ DB15043	150x42x14	Inland	16R	Request
★ DB15062	150x60x10	Ocean	02	Request
+ DB16002	160x44x10	Inland	64	Request
+ DB16053	160x54x12	Inland Spud	77	Request
> DB16558	165x58x13	Ocean	97	Charter
+ DB17048	170x48x10	Inland	67	Request
★ DB17735	177x35x12	Inland	48	Request
DB18038	180x54x-	Inland Spud	-	Request
> DB18075	180x60x13	Ocean	07	Request
DB19030	190x30x9	Inland Spud	17R	Request
+ DB19054	190x54x12	Inland	75	Request
DB19242	192x42x12	Inland Spud	79	Request
> DB19768	198x51x14	Ocean	16	Request
> DB19769	198x51x14	Ocean	16	Request
+ DB20560	205x60x13	Ocean	16	Request
★ DB22052	220x54x14	Inland	92	Request
> DB22069	193x60x14	Ocean	98	Request
> DB22073	220x60x14	Ocean	98	Request
> DB23076	230x60x14	Ocean	03	Request
> DB23081	230x70x16	Ocean	New	Quote
★ DB23140	231x40x12	Inland	05R	Request
★ DB23141	231x40x12	Inland	05R	Request
+ DB23660	237x60x14	Inland	65	Request
> DB23665	236x66x11	Ocean	80	Request
> DB23666	236x66x11	Ocean	80	Request
★ DB24002	240x72x14	Ocean	82	Request
> DB24050	240x53x14	Ocean	09	Request
> DB24051	240x53x14	Ocean	09	Request
★ DB24079	240x72x14	Ocean	82	Request
> DB25032	250x80x16	Ocean	11	Request
★ DB25038	255x48x10	Inland	15	Request
> DB25057	250x80x16	Ocean	07	Charter
> DB25079	250x80x16	Ocean Spud	19	Charter
> DB25097	250x80x16	Ocean	10	Charter
★ DB25111	250x72x15	Inland	81	Request
DB25124	250x72x16	Ocean	99	Request
> DB25141	250x80x16	Ocean	13	Request
★ DB26003	260x72x16	Ocean	81	Request
DB26073	260x72x16	Ocean	08R	Request
> DB26751	267x51x16	Ocean	78	Request
> DB28070	280x70x16	Ocean	10	Request
> DB28086	280x80x18	Ocean	04	Request
> DB30028	300x80x18	Ocean	10	Request
> DB30081	300x90x18	Ocean	08	Request

Ask for a list of Sectional and Other Size Barges

File	Dimensions	Remarks	Built	Price(\$)
DB30082	300x90x18	Ocean	08	Request
> DB30084	300x80x18	Ocean	10	Request
DB30291	303x90x22	Ocean	76	Request
> DB30139	300x90x18	Ocean	08	Request
> DB30150	300x100x18	Ocean	14	Request
> DB30397	303x118x19	Ocean	12	Request
DB33013	330x100x20	Ocean	06	Request
DB33016	330x100x20	Ocean	10	Request
DB33017	330x100x20	Ocean	05	Charter
> DB33098	330x88x20	Ocean	09	Request
> DB34592	345x90x21	Ocean	08	Request
> DB34593	345x90x21	Ocean	09	Request
> DB34594	345x90x21	Ocean	08	Request
> DB36592	365x92x23	Ocean	06	Request

Derrick Barges

File	Dimensions	Remarks	Built	Price(\$)
★ DK09060	90x60x9	Inland Spud	55	Charter
DK10050	100x50x6	Inland 46T Boom	-	Request
DK10533	105x33x7	Inland 7T	61	Request
★ DK12045	120x45x7	Ocean Spud	94	Charter
+ DK14100	140x40x10	Inland BE-88B	79R	Request
DK15075	150x74x10	300T A-Frame	79	Request
> DK15093	152x90x-	Inland 250T	14	Request
+ DK16050	160x51x14	Inland 100T	42	Request
+ DK16051	160x50x12	Inland 45T	42	Request
> DK26380	263x82x15	Ocean 440T	13	Charter

Miscellaneous Barges

File	Dimensions	Remarks	Built	Price(\$)
> MB05949	59x49x5	Jack-Up	13	Request
> MB06239	62x39x5	Jack-Up	09	Request
> MB06240	62x39x5	Jack-Up	10	Request
> MB08257	82x57x5	Jack-Up	-	Request
> MB09859	98x59x7	Jack-Up	16	Request
> MB09860	98x59x7	Jack-Up	15	Request
> MB11888	118x89x10	Jack-Up	19	Request
> MB14199	141x98x14	Jack-Up	82	Charter
> MB15299	153x99x15	Jack-Up	13	Charter
> MB16459	164x59x16	Quarters - 60	84	Request
> DD08003	185x58x7	Drydock 1500T	85	Request
> MB18860	188x60x14	Ocean Lay	81	Request
> MB20053	200x50x15	Ocean Work - 200	08R	Request
+ MB21082	210x83x6	Hover 450T	09	Request
> MB25058	261x53x14	Quarters - 290	09R	Request
> MB25059	261x53x15	Quarters - 290	09R	Request
MB27588	275x80x20	Ocean Lay	70	Charter
> MB28082	280x80x16	Quarters - 200	09	Charter
> MB28590	285x90x18	Ocean Work - 364	08R	Request
> MB30104	300x104x24	Quarters - 200	11	Charter
> MB32801	328x100x25	Quarters - 330	09	Request
> MB36492	365x92x23	Ocean Work - 300	14R	Request
> MB44999	449x123x30	Ocean Lay	12	Request

R = Rebuilt

See www.marcon.com for more listings.

Details believed correct, not guaranteed. Offered subject to prior sale or charter.



Hopper Barges

File	Dimensions	Remarks	Built	Price(\$)
★ HB17148	171x46x16	Ocean Hopper	02	Request
> HB19354	194x54x12	Inland Hopper (12)	07	Request
> HB19552	195x53x-	Inland Hopper (2)	13	Request
> HB42678	427x78x25	Ocean Hopper ATB	93	Request
★ HB46580	465x80x34	Inland Hopper	04R	Request

Tankers & Tank Barges

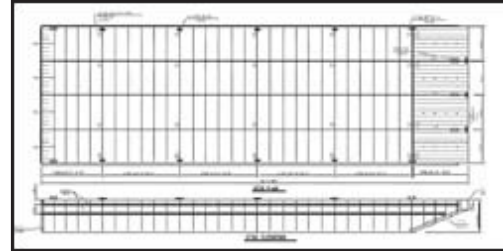
File	Dimensions	BBL	Remarks	Built	Price(\$)
> TA01422	213x49x17	9781	Tanker Dbl Bunker	12	Request
> TB02890	90x30x7	2800	Inland	70	Request
TB09003	195x35x10	9000	Inland	43	Request
TB10024	195x35x10	10000	Inland Dbl	65	Request
TB10620	195x40x10	10676	Inland Water	01	Request
> TB13920	200x56x14	13900	Ocean Dbl	11	Request
★ TB28006	298x54x13	28000	Inland Dbl	07	Request
> TB39003	280x72x20	39000	Ocean Dbl	13	Request
+ TB71320	320x64x23	66644	Ocean	81	Request
TB80007	336x74x25	80000	Ocean Dbl	08	Request
> TB99020	502x84x42	202300	Ocean Dbl	00R	Request
TB99558	467x86x38	158128	Ocean Dbl	06R	Request
TB99906	468x74x38	158128	Ocean Dbl	02R	Request

Supply Boats

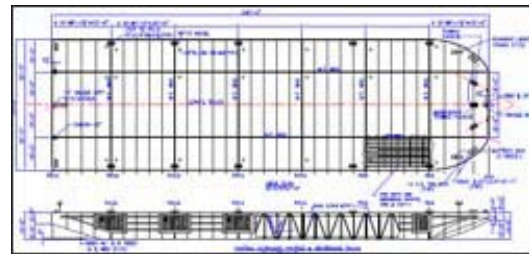
File	Dimensions	Machinery	HP	Built	Price(\$)
SU13008	130x28x12	2xCummins	1280	80	Request
SU13009	130x28x12	2xCummins	1280	81	Request
> SU13137	131x38x16	2xCAT3516	4000K	05	Request
SU13532	140x32x12	3xGM16V92	1908	91	Request
> SU13729	138x36x16	2xCummins	4400K	19	Request
> SU13740	138x37x13	2xCummins	4400	09	Charter
> SU14748	148x41x17	2xCAT3516	5150K	11	Request
> SU14936	148x36x16	2x-	2600	New	Quote
SU15000	150x26x10	2xCummins	1200	81	Request
SU15001	150x26x10	2xCummins	1200	81	Request
> SU15008	150x36x14	2xCAT3508	1920	80	Request
SU15027	150x36x12	2xCummins	1500	01	Request
> SU15736	157x36x11	2xCAT3412	1440	02	Request
> SU15741	158x36x12	2xMitsubishi	2800	14	Request
> SU15743	157x36x11	2xCummins	3400	05	Request
> SU15744	157x36x12	2xCummins	2400K	07	Request
SU16038	157x38x14	2xCATD398	1700	81	Request
> SU16039	161x38x14	2xCAT3512	3000	04	Request
> SU16044	161x39x16	2xCAT3508	2864	05R	Request
> SU16445	164x45x17	2x-	4400	New	Quote
> SU16447	164x45x17	2x-	3200	New	Quote
SU16501	180x36x12	2xCATD398	1700	09R	Request
SU16632	166x38x13	2xGM16V149	1800	80	Request
SU16656	166x36x12	2xGM16V149	1800	83	Request
+ SU16838	168x38x14	2xEMD12-645	3000	90R	Request

Listings Updated Daily On Internet

Featured Vessels & Barges For Sale



File: DB22073 Deck Barge - Ocean: 220.0' x 60.0' x 14.0'. Built in 1998 by Corn Island SY. Canada flag. GRT: 1,366. NRT: 409. ABS +A1 Barge expired. Lt Displ: 645lt. Deck Cargo: 3,251lt. **Deck Load: 2,500lb/ft2.** Rakes: Bow only. Bulkheads: 3 long'l / 5 transv. Watertight Compartments: 24. All welded steel. Four 12" double barrel bits and two towing padeyes. Not officially on the market, but we may be able to develop on a private & confidential basis. Close sister barge can be developed in same location. **Canada East Coast.**



File: DB24002 Deck Barge - Ocean: 240.1' x 72.0' x 14.5'. Built in 1982 by Bergeron Industries; LA. U.S. flag. GRT/ NRT: 2,150. ABS + A1 exp. 28 Feb 2022. **Dwt: 4,199T.** Deck Cargo: 4,119LT on 207' x 67' clear deck. **Deck Load: 1,500lb/ft2.** **U.S. Northeast. Prompt.**



File: DB24050 / DB24051 Deck Barge - Ocean (Two Available): 240.0' x 53.0' x 14.0'. Built in 2009 by Conrad. Vanuatu flag. GRT: 1,284. NRT: 385. Russian Maritime Register Class. **Dwt: 2,959lt.** Lt Displ: 569lt. **Deck Load: 1,500lb/ft2.** Rake (s): Double. Bulkheads: 6 transv / 2 long'l. Watertight Compartments: 17. Barges are in like new condition. **U.S. Gulf Coast. Prompt.**

+ Located West Coast ★ Located East Coast > Foreign Flag



Supply Boats, Continued

File	Dimensions	Machinery	HP	Built	Price(\$)	File	Dimensions	Machinery	HP	Built	Price(\$)
> SU17333	174x39x16	2xCummins	3200	08	Charter	> SU20942	210x48x15	3xCAT3312	3600 Z	07	Request
> SU17336	173x37x13	2xMAN	1905	79R	Charter	> SU20954	210x48x15	3xCAT3312	3600 Z	07	Request
SU17341	173x40x14	2xGM16V149	1800	82	Request	SU21004	210x49x18	2xCAT3516	4000	98	Request
SU17636	176x38x12	2xCATD398	1700	93R	Request	> SU21077	211x49x22	2xBergen	7200 K	02	Request
> SU17653	177x45x15	2xCummins	3400 K	10	Request	> SU21161	211x49x20	2xCAT3608	7000 K	04	Request
> SU17656	176x45x15	2xCummins	3400 K	08	Request	> SU21254	213x52x21	2xBergen	9000 K	07	Request
> SU17945	179x45x20	2xCummins	4600 K	15	Request	> SU21366	213x52x20	2xNiigata	6600 K	17	Request
> SU18052	180x45x17	2x-	3200	New	Quote	SU21400	220x42x14	2xEMD16-645	7340 K	82	Request
> SU18056	180x45x18	2xCAT3516	5150 K	11	Request	> SU21448	215x52x21	2xBergen	8046 K	10	Request
> SU18062	180x45x18	2xCAT3516	5150 K	11	Request	> SU21451	215x52x21	2xBergen	8000 K	10	Request
> SU18066	180x45x18	2xCAT3516	5150 K	11	Request	> SU21453	215x52x21	2xBergen	8150 K	10	Request
> MC18145	181x44x22	-x-	-	97	Request	> SU21454	215x52x21	2xBergen	8046 K	09	Request
> SU18163	194x45x18	2xCAT3516	5150	11	Request	> SU21455	215x54x21	2xBergen	8000 K	10	Request
> SU18240	183x39x18	4xPolar	4200 K	71	Request	> SU21653	216x52x20	2xNiigata	6600 K	17	Request
SU18343	183x40x14	2xEMD12-645	2200	83	Request	> SU21942	216x42x16	2xEMD16-645	6140 K	82	Request
> SU18352	185x44x20	2xBergen	4900 K	04	Request	> SU21974	221x52x23	2xBergen	5450	97	Request
+ SU18529	185x40x10	2xCATD399	2250	94R	Request	> SU21975	221x52x23	2xCAT3406	5450	02	Request
> SU18803	188x45x16	2xYanmar	5000	08	Request	> SU21976	221x52x23	2xCAT	5450	03	Request
SU19051	199x44x19	2xCAT3512	2560 Z	14R	Request	> SU22033	220x49x22	2xCAT	11040 K	09	Charter
> SU19059	190x45x18	2xCAT3516	5220	09	Request	> SU22034	220x49x22	2xCAT	11040 K	09	Charter
> SU19066	190x45x18	2xCAT3516	5220	09	Request	SU22049	220x44x15	2xEMD12-645	3000	97R	Request
SU19072	199x44x19	2xCAT3512	2562 Z	00	Request	SU22068	220x40x14	2xEMD12-645	3000	89	Request
SU19073	190x44x19	2xCAT3512	2562 Z	99	Request	SU22072	220x56x19	2xCAT3516	3200 Z	98	Request
+ SU19140	191x40x12	2xEMD16-645	3900	80	Request	SU22074	220x48x17	2xCAT3516	3420	95	Request
> SU19146	191x45x18	2xYanmar	4000	02	Request	SU22076	220x46x16	2xEMD16-645	3900	98	Request
> SU19148	191x45x18	2xCummins	4400	10	Request	SU22083	220x46x16	2xCummins	4666	00	Request
> SU19158	191x45x18	2xCummins	4400	11	Request	SU22084	220x46x16	2xEMD16-645	3900	99	Request
> SU19238	193x48x18	2xNiigata	5000	09	Request	> SU22245	222x48x23	4xBergen	12240	83	Charter
> SU19261	194x49x20	2xCAT3516	5150 K	05	Request	> SU22338	223x54x24	2xWartsila	12070 K	09	Request
> SU19264	194x49x20	2xCAT3516	5140 K	05	Request	SU22542	225x46x18	2xCummins	3894 Z	07	Request
> SU19451	194x45x18	2xDeutz	5500 K	03	Request	SU22545	225x46x18	2xCummins	3894 Z	07	Request
> SU19454	194x49x20	2xCAT	5150 K	17	Request	> SU22656	226x51x23	2xBergen	10657 K	03	Request
> SU19469	194x49x20	2xCAT3516	5150 K	12	Request	> SU22660	226x51x23	2xBergen	10800 K	03	Request
> SU19559	196x50x16	2xCAT	5220	17	Request	> SU22948	230x52x24	2xWartsila	8046 K	07	Request
> SU19629	197x47x20	2xCAT3516	4200 K	19	Request	> MC22956	229x56x13	2xDorman	1890	98	Request
> SU19630	197x47x20	2xCAT3516	4400	19	Request	> SU22966	229x55x23	3xCAT3516	7830 Z	17	Request
> SU19633	197x52x21	2xNiigata	5360 Z	17	Request	> SU23001	230x40x14	2xCAT3512	3000 Z	00R	Request
> SU19641	196x45x20	2xCummins	3600 K	15	Request	> MC23065	230x64x14	2xCAT3412	1662 Z	06	Request
> SU19645	197x47x20	2xCummins	4400 K	19	Request	> SU23754	238x56x25	2xBergen	12240 K	09	Request
> MC19678	197x79x18	2xCAT3412	-K	20	Charter	> SU23759	238x56x25	2xBergen	12240 K	09	Request
> SU19756	197x52x17	2xCAT	5150	17	Request	> SU23760	238x56x25	2xBergen	12240	09	Request
> SU19758	197x52x20	2xNiigata	5000 K	09	Request	> SU23852	236x52x23	2xBergen	5450	03	Request
> SU19759	197x52x20	2xNiigata	5000 K	09	Request	SU24052	240x52x18	3xEMD20-645	12000	86	Request
SU19800	198x42x15	2xEMD16-645	6140	82	Request	SU24087	240x56x21	2xCAT3516	3200 Z	98	Request
> SU19856	198x52x21	2xNiigata	6600 K	17	Request	SU24088	240x56x21	2xCAT3516	3200 Z	00	Request
SU20010	190x54x16	2xCAT3516	4000	98	Request	> SU24644	246x56x26	4xCummins	5300 Z	17	Request
> SU20068	201x52x20	2xYanmar	5220 K	10	Request	> SU24654	246x57x26	2xNiigata	6000	17	Request
> SU20346	203x45x18	2xYanmar	5800	91	Charter	SU24666	244x56x21	2xCAT3608	7268 Z	00	Request
> SU20651	206x49x20	2xWartsila	5500 K	06	Request	> SU24674	246x57x26	2xNiigata	6000 Z	12	Request
						> SU24681	246x57x26	2xNiigata	6000 Z	13	Request
						> SU24685	246x57x26	2xNiigata	6000	19	Request

Listings Updated Daily On Internet

+ Located West Coast

★ Located East Coast

> Foreign Flag

Details believed correct, not guaranteed. Offered subject to prior sale or charter.



Supply Boats, Continued

File	Dimensions	Machinery	HP	Built	Price(\$)
> SU24686	246x57x26	2xNiigata	6000 Z	14	Request
> SU24690	246x57x26	2xNiigata	6000 Z	17	Request
> SU24694	246x56x26	2xNiigata	6000	13	Charter
> SU24970	249x61x26	2xMAK	12060	12	Request
SU25154	251x54x23	3xCAT3516	7744 Z	99	Charter
> SU25501	258x52x23	4xCAT	4881 Z	17	Request
> SU25552	256x61x26	2xNiigata	6000 Z	17	Request
> SU25553	256x61x26	2xNiigata	6000 Z	17	Request
> SU25573	256x60x26	2xNiigata	6400	19	Request
> SU25667	256x61x26	2xNiigata	5916 Z	17	Request
> SU25669	256x61x26	2xWartsila	12240 K	17	Request
> SU26054	260x60x25	4xCAT3516	10200 Z	02	Request
SU26057	260x56x19	2xCAT3516	3420 Z	97	Request
SU26058	260x56x21	2xCAT3606	5400 Z	01	Request
> SU26059	260x60x25	4xCAT3516	10200 Z	03	Request
SU26067	260x56x21	2xCAT3606	5400	02	Request
SU26068	260x56x19	2xCAT3516	3420	96	Request
SU26069	260x56x19	2xCAT3516	3420 Z	08R	Request
SU26258	262x58x24	2xCAT3612	14000 K	98	Request
> SU26263	262x59x26	4xBergen	16800 K	02	Request
> SU27065	271x62x25	2xBergen	7200	92	Request
SU27256	272x56x19	2xCAT3516	3420 Z	10R	Request
SU27257	272x56x19	2xCAT3516	3420 Z	07R	Request
> SU27861	279x72x26	2xYanmar	6000 Z	19	Request
> SU27872	278x72x27	2xWartsila	8207 K	13	Request
> SU27873	278x72x27	2xWartsila	8207 K	13	Request
SU27965	279x65x26	4xEMD16-710	16000 Z	99	Request
> SU28565	276x62x25	2xBergen	9600	98	Request
> SU28576	286x62x24	4xCummins	9332 Z	14	Request
SU30065	300x60x24	2xCAT3608	6600	02	Request
SU30160	301x60x24	2xCAT3608	7268 Z	07	Request
> MC51082	591x82x43	1xMitsubishi	8000	09R	Request

Utility Boats

File	Dimensions	Machinery	HP	Built	Price(\$)
+ UB02008	20x8x-	1xFord	125	00	Charter
> UB02409	25x10x4	2xCummins	500	New	Quote
+ UB05016	50x14x7	2xGM6-71	348	89	Request
+ UB06022	60x20x5	2xMTU	800	08R	Request
+ UB06502	65x18x7	2xJohn Deere	800	09R	Request
> UB07832	78x33x11	2xCAT3412	1690	19	Request
> UB08226	83x27x8	2xYanmar	700	99	Request
> UB10121	101x21x10	2xMAN	2600	13	Request
UB11004	110x28x9	2xGM16V92	1200	82	Request
UB11017	110x26x8	2xGM16V92	1200	81	Request
UB11028	110x26x9	2xGM16V71	910	82	Request
UB11032	110x26x9	2xGM16V92	1200	78	Request
UB11039	110x26x9	2xGM16V92	1200	79	Request
UB11047	110x26x11	2xGM16V92	1200	78	Request

K = Kort

Z = Azimuthing

T = Tractor

Featured Vessels & Barges For Sale



File: SU18163 Supply Boat-AHTS: 193.9'x45.3'x18.0'. **Built in 2011** by Chinese SY. Vanuatu flag. GRT: 1,123. ABS A1, FiFi 1, OSV, AMS, **DPS-1**, ISM, ISPS, MLC. Full SOLAS. S/ S overdue. Dwt: 1,135mt. 500mt on 4,000ft² clear deck. FO: 419.5M3. FW: 494.2M3. DW: 178m3. BW: 165.7M3. Dry Bulk: 113m3. Liq. Mud: 134.5m3. Crane: 1-2T@6m. M/Es: 2xCAT 3516B HD total **5,150BHP**. 8T stern & bow thrusters. **BP: 68.68MT**. Gensets: 2-450kW; 2-400kW. Fifi: 2-1,200m³/hr monitors; 11.6m³ foam tank. 30 bunks. DP-1. In lay-up since 09/16. **U.S. Gulf Coast.**



File: SU21455 Supply Boat-AHTS: 215.2'x54.1'x21.3'. Built in 2010 by Nam Cheong Dockyard.; Miri. Foreign flag. GRT: 2,147. ABS +A1, Tow, FiFi-1, OSV-AH, (E), +AMS **DPS-1**, Unrestricted. S/S due 07/2020. D/D overdue. Dwt: 2,059mt. 415m² clear deck. FO: 674.3m³. FW: 416.8m³. DW: 406.4m³. Dry Bulk: 133.2m³ in 4 tanks. Liq. Mud: 322.5m³. Crane: 5T SWL. Winch: 300mt d/d w/f. Line Pull: 250T@8.5m. Stern Roller. M/Es: 2xBergen total **8,000BHP**. 2-Rolls-Royce CP props. Kort nozzles. 640kW stern & bow thrusters. **BP: 86.7MT**. Gensets: 2-1,450kW / shaft, 1-140kW & 450kW 440vAC 60Hz 3Ph. **FiFi-1**. 38 in 13 cabins. **Caribbean.**



File: SU30160 Supply Boat: 301.0'x60.0'x24.0'. Built in 2007 by No. American Fabricators. U.S. flag. GRT: 3,575. ABS +A1, +AMS, +ACC, +**DPS-2**; **Oil Rec 1, Ice Class A1**, Unrestricted. S/S & D/D overdue. **Dwt: 4,100ft**. 169'x50.5' clear deck. FO: 358,962g. FW: 37,206g. BW: 250,267g. Dry Bulk: 11,440ft³ in 5 tanks. Liq. Mud: 12,245bbl. Crane: 15T hyd. knuckleboom. Winch: 250T tow & 2 tuggers. M/Es: 2xCAT 3608 total 7,268BHP. 2-Schottel CP props. Kort nozzles. 1,700HP stern & bow thrusters. BP: 80mt. Gensets: 2-910kW, 2-2,050kW/shaft. Fifi: 2-1,200m³/hr monitors. Quarters: 41 persons. High strength EH36 grade steel ice belt plating on bow, mid-body and stern. **U.S. Gulf Coast.**

R = Rebuilt

See www.marcon.com for more listings.

Details believed correct, not guaranteed. Offered subject to prior sale or charter.



Utility Boats						File	Dimensions	Machinery	HP	Built	Price(\$)
File	Dimensions	Machinery	HP	Built	Price(\$)	> CB04912	49x13x6	2xIveco	840	19	Request
UB11050	110x26x9	2xGM16V92	1200	80	Request	> CB04916	49x16x9	2xVolvo	1200	New	Quote
UB11055	110x26x9	2xGM16V92	1200	79	Request	> CB04917	49x17x5	2x-	1100	New	Quote
UB11056	110x26x9	2xGM16V92	1200	79	Request	> CB04918	49x16x8	2xCummins	1000	New	Quote
UB11058	110x26x9	2xGM16V92	1200	79	Request	★ CB04920	49x15x6	2xJohn Deere	600	77	Request
UB11065	110x26x9	2xGM16V92	1200	81	Request	★ CB05018	50x15x7	2xCummins	560	02	Request
UB11067	110x26x7	2xGM16V92	1200	81	Request	+ CB05115	51x13x6	2xGM8V71	460	61	Request
UB11075	110x26x9	2xGM16V92	1200	81	Request	> CB05218	52x16x7	2xMTU	1068	96	Request
UB11076	110x26x9	2xGM16V92	1200	82	Request	★ CB05219	53x16x-	2xCummins	550	77	Request
> UB11534	115x26x10	2xGM16V92	1200	91	Request	> CB05412	54x15x8	2xCATC18	1350	10	Request
UB12026	120x26x9	2xGM16V92	1200	80	Request	> CB05413	54x15x8	2xCATC18	1350	10	Request
> UB12040	120x25x11	2xGM16V92	1200	78	Request	> CB05414	54x15x8	2xCATC18	1350	10	Request
> UB12043	120x29x13	2xCAT3512	2560	03	Request	> CB05515	52x18x5	2xCATC18	670	New	Quote
UB13030	130x26x9	2xCummins	1200	77	Request	> CB05516	56x16x9	2xCummins	1430	19	Request
UB13031	130x30x9	2xGM16V92	1200	82	Request	CB06237	62x37x8	2xCAT3412	1500	93	Request
UB14030	140x32x11	2xCummins	1280	84	Request	CB06501	65x17x6	2xGM12V71	900	73	Request
Crew Boats						CB06502	65x17x6	2xGM12V71	900	72	Request
						CB06512	65x18x8	2xGM12V71	1020	78	Request
File	Dimensions	Machinery	HP	Built	Price(\$)	+ CB06532	65x17x9	2xCummins	880	66	Request
★ CB02500	25x-x-	2xHonda	270	07	Request	CB06533	65x18x9	2xGM12V71	960	70	Request
★ CB03200	32x-x-	2xHonda	-	15	Request	CB06548	65x17x9	2xGM12V71	900	77	Request
★ CB03201	32x-x-	2xHonda	-	-	Request	> CB06815	68x16x5	2xCAT	1140	04	Request
> CB03210	32x10x4	1xVolvo	330	New	Quote	> CB07118	72x18x-	2xMAN	-	00	Request
CB03212	32x12x-	1xGM8V71	230	82	Request	CB07242	84x43x19	2xCAT3516	4000	04	Request
CB03517	35x13x6	2xGM6-71	350	76	Request	★ CB07819	78x22x9	2xCummins	2700	04	Request
★ CB03613	36x14x-	2xCummins	-	05	Request	> CB07824	78x26x12	2xMTU	4425	19	Request
★ CB03614	36x14x-	2xCummins	-	05	Request	> CB07827	79x26x12	2xCAT	2900	19	Request
★ CB03815	40x14x6	2xJohn Deere	650	80	Request	> CB07831	79x23x11	2xCAT3412	1440	05	Request
★ CB04014	40x14x6	2xJohn Deere	600	79	Request	CB08080	80x17x9	2xGM12V71	1050	78	Request
CB04117	41x14x6	2xGM6-71	348	82	Request	> CB08679	86x19x9	2xCAT3412	1230	03R	Request
CB04120	41x13x4	2xCummins	680	73	Request	+ CB09000	93x21x9	3xJohn Deere	1578	73	Request
CB04121	41x14x6	2xGM6-71	348	82	Request	+ CB09026	90x22x9	3xGM Series 60	1800	74	Request
> CB04210	43x13x7	1xMAN	440	19	Request	+ CB09028	90x24x-	3xGM Series 60	1530	73	Request
CB04211	42x15x5	2xGM6-71	360	97	Request	+ CB09828	100x23x6	3xGM12V71	1380	16R	Request
CB04219	42x12x5	2xGM6V71	460	81	Request	> CB09829	98x30x10	2x-	3600	New	Quote
CB04220	42x14x4	2xGM6-71	330	02R	Request	> CB10032	100x21x11	2xCummins	2800	07	Request
+ CB04316	43x14x6	2xJohn Deere	650	05R	Request	> CB10038	102x23x10	3xGM12V71	2022	10R	Request
> CB04414	44x14x6	2xCAT3208	630	95	Request	> CB10121	102x21x10	3xGM12V71	1600	05R	Request
> CB04415	44x14x6	2xCAT3208	630	95	Request	> CB10230	102x24x12	2xGM16V92	2200	95	Request
> CB04509	46x10x-	2xIveco	1300	11	Request	CB10537	105x22x8	3xGM12V71	1575	80	Request
> CB04512	46x13x5	2xYanmar	740	19	Request	CB10538	105x22x7	3xGM12V71	1800	80	Request
> CB04518	46x16x-	2xIveco	1100	10	Request	> CB10999	110x25x12	4xGM12V71	2040	97	Request
> CB04519	46x16x-	2xCummins	1000	12	Request	> CB11009	110x25x12	4xGM12V71	2040	97	Request
> CB04520	46x16x-	2xCummins	1000	12	Request	+ CB11049	110x24x9	4xGM Series 60	2400	80	Request
> CB04611	46x14x5	2xIveco	740	19	Request	> CB11222	112x25x11	3xCAT3412	2550	99	Request
> CB04717	48x15x-	2xGM	590	97	Request	> CB11420	114x21x9	2xGM16V149	3600	86	Request
> CB04810	48x14x10	2xMAN	888	07	Request	> CB11421	114x21x9	2xGM16V149	3600	86	Request
> CB04811	48x14x10	2xMAN	888	07	Request	> CB11527	116x23x11	3xCATC32	4200	05	Request
> CB04810	48x14x10	2xMAN	888	07	Request	> CB11817	118x25x12	3xCummins	4107	13	Request
> CB04810	48x14x10	2xMAN	888	07	Request	> CB11831	118x22x10	2x-	3600	New	Quote
> CB04811	48x14x10	2xMAN	888	07	Request	> CB12020	120x20x12	4xGM12V92	2720	90	Request

Listings Updated Daily On Internet

+ Located West Coast

★ Located East Coast

> Foreign Flag



Crew Boats, Continued

File	Dimensions	Machinery	HP	Built	Price(\$)
> CB12022	120x26x12	4xGM12V71	2040	91	Request
+ CB12522	125x25x7	2xGM16V149	2800	79	Request
CB13000	130x25x12	4xCummins	2800	91	Request
> CB13228	132x26x11	3xCATC32	4203	07	Request
CB13509	135x27x12	4xCAT3412	3160	93	Request
> CB13722	138x26x12	3xCATC32	4350	New	Quote
CB14500	145x28x12	5xCummins	3500	96	Request
> CB15029	170x28x13	5xCummins	6585	02	Request
> CB15126	151x26x12	2xCummins	3200	07	Request
CB15235	152x30x12	4xMitsubishi	4720	97	Request
CB15729	157x32x14	4xCAT3512	6300	02	Request
CB15730	157x32x12	4xCAT3512	6300	03	Request
CB15735	157x31x14	4xCAT3512	6300	02	Request
CB15736	157x32x14	4xCAT3512	6300	05	Request
> CB16500	165x32x13	3xCAT3516	6000	96	Request
CB16524	165x32x13	3xCAT3516	6600	97	Request
CB16543	165x32x13	3xCAT3516	6000	00	Request
> CB16544	165x32x13	3xCAT3516	6000	99	Request
> CB17031	171x30x13	4xCAT3512	6800	10	Request
CB17048	170x30x13	4xCAT3512	6700	05	Request
CB17049	170x30x13	4xCAT3512	7240	06	Request
CB17050	170x30x13	4xCAT3512	7240	08	Request
CB17543	175x32x13	3xCAT3516	6000	97	Request
CB17544	175x32x13	3xCAT3516	6600	14R	Request
CB17546	175x32x13	3xCAT3516	6600	98	Request
CB17547	175x32x13	3xCAT3516	6000	12R	Request
CB18136	181x34x14	4xCummins	7200	08	Request
> CB18841	189x41x15	4xMTU	15442	16	Request
CB19030	194x30x14	4xCAT3512	7340	-	Request

Landing Craft

File	Dimensions	Machinery	HP	Built	Price(\$)
+ LC05718	62x18x3	3xScania	1950	11	Request
> LC10221	102x21x8	2xYanmar	-	New	Quote
+ LC11934	118x34x6	3xGM	578	11R	Request
> LC12531	125x31x8	2xCummins	1000	18	Request
> LC12727	128x28x8	2xYanmar	938	18	Request
> LC12932	130x33x10	2xCAT3406	800	18	Request
+ LC13433	134x32x8	2xCATC18	1200	14R	Request
> LC14138	141x38x7	2xGM12V71	700	-	Request
> LC14737	148x36x8	-x-	-	New	Quote
> LC15040	151x36x10	2xCummins	1280	06	Request
> LC15438	154x36x10	2xYanmar	1300	16	Quote
> LC15536	156x36x10	2xCummins	1200	14	Request
> LC15941	159x39x9	2xYanmar	1658	18	Request
> LC16038	160x38x11	2xCAT3406	760	97	Request
> LC16538	166x38x10	2xCAT3412	1422	99	Charter
> LC17162	185x39x14	2xCummins	1280	07	Request
> LC17346	174x45x12	2xCummins	1200	09	Request

K = Kort

Z = Azimuthing

T = Tractor

Featured Vessels & Barges For Sale



File: [CB06532](#) Crew Boat: 65.0' x 17.2' x 8.9'. Built in 1966 by Halter Marine; LA. U.S. flag. GRT: 56. USCG COI exp. 05/2021. FO: 950g. FW: 80g. M/Es: 2 x Cummins N-14M total 880BHP. 2 - 32" x 32" FP props on 3" shafts. Tier 1. **Speed about 16kn max.** Gensets: 1 - 20kW / Northern Lights. **Passengers: 48. Steel hulled crew boat / water taxi.** Reportedly in very good condition. **U.S. West Coast.**



File: [CB07819](#) Pilot Boat: 78.2' x 21.5' x 9.2'. Built in 2004 by Kvichak Marine Industries Inc., WA. U.S. flag. GRT: 98. FO: 1,250g. FW: 200g. M/Es: 2 x Cummins KTA-38M2 total 2,700BHP. 2 - Hamilton 651 waterjets props. Range: 205nm. **Speed about 28kn.** Gensets: 2 - 45kW / Cummins ONAN 60Hz 3Ph. Quarters: 3 crew & 6 pilots. AirCon. Galley. All aluminum pilot boat. Popsafe shock-absorbing foam fendering system. Designed by Camarc Design, UK to ABS structural approval. Excellent maneuverability and sea keeping characteristics. 500lb. SWL safety / rescue davit. Boarding Platform positioned between house and breakwater. **U.S. East Coast.**



File: [CB09028](#) Crew Boat: 90.0' x 24.0' x 4.00' loaded draft. Built in 1973 by Jeanerette LA. U.S. flag. GRT: 90. USCG COI exp. 10/2022. Light Disp.: 49lt. M/Es: 3 x GM 60 Series Tier II total 1,530BHP. **Speed about 18kn** on 45gph. Gensets: 2 - 20kW Tier 3. **U.S. West Coast.**

R = Rebuilt

See www.marcon.com for more listings.

Details believed correct, not guaranteed. Offered subject to prior sale or charter.



Landing Crafts, Continued

File	Dimensions	Machinery	HP	Built	Price(\$)
> LC17860	179x59x15	2xCummins	1280	10	Request
> LC18743	188x43x12	2xCATC18	1120	15	Request
> LC18744	188x43x12	2xCATC18	1120	15	Request
> LC21049	210x49x15	2xCummins	2000	12	Request
> LC21659	216x59x15	3xCATC18	2040	16	Request
> LC21945	220x46x15	2xCAT3412	1500	09	Request

Passenger Vessels

File	Dimensions	Machinery	HP	Built	Price(\$)
> PC11045	110x45x12	2xGM16V92	1926	86	Request
> PD08523	85x21x3	1xVolvo	946	07	Request
> PD11421	115x21x3	1xDeutz	226	95R	Request
> PD11726	117x26x5	3x-	860	84	Request
> PD11937	119x37x10	2xDeutz-MWM	4290	90	Request
> PD12423	124x24x4	2xDeutz	-Z	70	Request
> PD13615	137x16x8	2xCAT3512	3000	-	Request
> PD14118	141x18x6	2xCAT3516	4800	98	Request
> PD14119	141x18x9	2xCummins	1800	98	Request
> PD14216	142x16x8	2xCummins	3170	-	Request
> PD14716	148x16x8	2xCATC32	2900	-	Request

Research & Dive Vessels

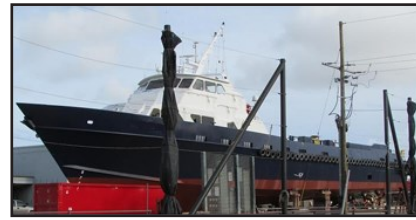
File	Dimensions	Machinery	HP	Built	Price(\$)
> RV02609	26x10x3	1xMercury	320	19	Request
+ RV05820	58x21x5	2xScania	691	10	Request
> RV17356	174x45x15	2xCummins	3400K	09	Request
> RV17946	179x45x20	2xCummins	4600K	14	Request
> MC18144	181x44x22	None	-	94	Request
RV19241	192x40x14	2xCATD399	2250	08R	Request
> MC21350	222x50x25	2xB&W	6360	80	Request
RV22054	217x54x20	2xEMD16-645	3900Z	11R	Charter
> RV22147	221x46x19	2xB&W-Alpha	7200K	01R	Request
+ RV23142	231x42x20	2xEMD12-567	2400	02R	Request
> RV24055	238x54x20	2xEMD16-645	3900K	11R	Charter
> MC24666	246x66x21	2xNiigata	6000Z	09	Request
> RV25556	256x56x25	2xBergen	6600	93	Request
> RV45701	458x66x41	2xPielstick	6420	99R	Request

About Marcon

Since our first sale in 1983, Marcon has sold/chartered over 1,494 vessels and barges between companies located in the U.S. and worldwide. We specialize in the towing, marine construction and offshore petroleum industries. Although our primary focus, as shipbrokers, is in the sale, purchase and charter markets, we have also assisted many companies in evaluating capital acquisitions, market rates, newbuilding projects and feasibility of trade routes. Marcon continues to stand ready to provide clients with a high level of personalized service.

Listings Updated Daily On Internet

Featured Vessels & Barges For Sale



File: CB13509 Crew Boat: 135.0' x 27.0' x 11.7'. Built in 1993 by Breaux Bros. Enterprises. U.S. flag. GRT: 98. USCG Subch. "T", 62 persons exp. 11/2018. ABS Loadline exp. 01/2017. Light Disp.: 166lt. Deck Cargo: **180LT on 73' x 22.5' clear deck.** FO: 12,206g. FW: 828g. DW: 17,154g. M/Es: 4 x CAT 3412 total 3,160BHP. 4 - 42" x 36" props. Econ speed @ 20kn on 100g/hr. **Speed about 23-25kn.** Pumps: DW / FW: 200gpm @ 250', FO: 200gpm @ 130'. Gensets: 2 - 50kW 120/208vAC 60Hz 3Ph. Fifi: 1 - 1,000gpm monitor. 10 in 4 cabins. AirCon. **Passengers: 62** business class seats. REDUCED PRICE. Laid up. **U.S. Gulf Coast.**



File: CB16500 Crew Boat: 165.0' x 32.0' x 13.0'. Built in 1996 by Breaux Bros. Ent.; LA. Foreign flag. GRT: 98. ABS A1, AMS, Loadline. Dwt: 500lt. **Deck Cargo: 300lt on 2,940ft² clear deck.** FO: 20,263g. FW: 1,066g. BW: 35,019g. M/Es: 3 x CAT 3516B-TA total 6,000BHP. 3 - FP props. Bowthruster 150HP. **Speed about 29kn.** Pumps: FO: 190gpm @ 140'; FW: 190gpm @ 140'. Gensets: 2 - 75kW / CAT 3406. Fifi: 1 - 3,500gpm monitor. Quarters: 7. **Passengers: 65. Fast Supply/Crew Boat.** Drop down thrust master 200HP bowthruster. Anti-roll tanks (FWD: 1,335g/Aft: 1,209g). 6' min freeboard. Joystick control. **U.S. Gulf Coast.**

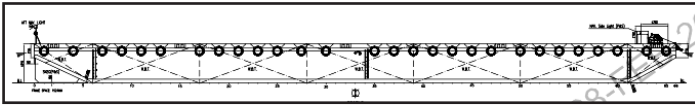


File: CB19030 Crew Boat: 194.0' x 30.0' x 14.2'. Built by Breaux Brothers Enterprises, LA. U.S. flag. GRT: 97. ABS +A1, HSC Crewboat, +AMS, +DPS 21, Unrestricted. S/S and D/D overdue 12/2017. Dwt: 440lt. FO: 128m3. M/Es: 4 x CAT 3512C-HD total 7,340BHP. 4 - FP props. Gensets: 1-75kW, 1-80kW. Fifi: 2 - 6,000gpm monitors. AirCon. Offered for outright sale strictly "as is, where is" without any warranties or representations except as to ownership. **U.S. Gulf Coast.**

+ Located West Coast ★ Located East Coast > Foreign Flag



Featured Vessels & Barges For Sale



File: [DB33016](#) Deck Barge - Ocean: 330' x 100' x 20'. Built in 2010 by Nanjing Shunxin Ships. U.S. flag. GRT: 4,951. NRT: 1,485. ABS +A1 Barge Exp 12/2020. Dwt: 11,000mt. 305'x92' clear deck. **Deck Load: 20T/m2. Bulkheads: 7 Traverse/3 Long. Flat top ballastable barge. Flush deck with recess bollards. 12' Breakwater on bow. Foreign built and not eligible for U.S. Jones Act Coastwise Trade. **U.S. Gulf Coast. Prompt.****



File: [MB21082](#) Hover Barge: 210.0' x 82.7' x 5.6'. Built in 2009 by Sundial Marine Construction & Repair. U.S. flag. Not classed. Deck Cargo: **450T on 9,000ft2 clear deck. Bulkheads: 4 long'l / 4 transv. FO: 8,000g. Pumps: Fuel transfer system. 2-1,120lb. plow type in chutes anchors. Windlass: 2-JK Fab. hyd. single drum. Crane: 2 - Grove M977 hyd. Knuckleboom. Winch: 4 - 30T Lantec 540 single drum hyd. Deck with 1.25" wire. Gensets: 1 - 150kW CAT D150-8 / CAT2682 208/120vAC 60Hz 3Ph. World's largest hover barge designed & engineered by BMT Nigel Gee, U.K. and Hovertrans, Ltd. Towed by vessel, tractor or other method. **Can haul up to 450 tonnes containerized or odd dimension project cargoes & modules on a 55.2m x 16.2m heavy deck over shallow water, ice, slush, swamps, wetlands, tundra and other environmentally challenging & sensitive terrains.** Hovers abt. 5' off the surface with minimal footprint. Loaded displ abt. 1,100T. Hull built of DH-36 low temperature (-20 deg. F) steel. Epoxy coated exterior deck & side shell. Designed operating temperature +40 deg. C to - 20 deg. C. 16' x 10' midships moon pool for coring & drilling ops. 10mt/m2 bow ramp plus two side ramps with Braden hydraulic side winches for Ro/Ro ops. Four 1,051HP CAT3412 engines drive Woodcock & Wilson lift fans abt. 5.5' in diameter in custom built, sound attenuated aluminum engine/fan houses with CO2 fire suppression systems. Two 3,000psi @ 45gpm hydraulic power packs with CAT3126 engines. Barge RF wireless radio remote control system with four belly pack and local station. 4 controllers included. 8 deck lights. 4 Panama chocks & 5 bollards aft for making up to push tug. Spare rubber skirting. Launched early 2014. **Commissioned, passed hover lift test and christened April 2017.** Fully operational. **Exclusively in our hands.** Owner may consider sale, but prefers charter. **U.S. Northwest. Prompt.****

K = Kort

Z = Azimuthing

T = Tractor

Featured Vessels & Barges For Sale



File: [TG52132](#) Tug - ATB - Twin Screw: 133.7' x 45.6' x 23.4'. Built in 1974 by Oy Wartsila Ab; Finland. Rebuilt: 1993. Canada flag. GRT: 768. LR + 100A1, Ice Class FS 1A, LMC exp. 2018. Dwt: 186mt. FO: 216m3. FW: 77.3m3. BW: 115.8m3. Winch: Seebeck 50MP tow hook. M/Es: 4 x Wartsila 824TS total **5,245BHP. 2 - Lips 260RPM FP new 06/91 props. Diesel electric. 4 - 925kW 500vDC gensets & 2 - 2,378HP elect. Motors. Bowthruster 576HP. Speed about 14kn free. Pumps: BW: 40m3/h, Fire: 300m3/h & 50m3/h. Gensets: 1 - 90kW / Valmet; 3 - 131kW / Saab 390vAC 50Hz. Fifi: Fixed CO2 in engine & control rooms. **Ice Class 1A Super, articulated pusher tug with raised pilothouse.** 31.82m total fixed height from keel. **Taisei Engineering articouple linkage system.** Six person rescue boat with davit. **Suitable for Finnish coastal & Baltic Sea service including Skagerrak & Kattegat** and previously classed as Ice Breaker, Baltic Service.**

File: [HB42678](#) Hopper Barge - Ocean: 426.9' x 78.4' x 24.6'. Built in 1993 by Kvaerner Masa; Finland. Canada flag. GRT/ NRT: 1,558. LR + 100A1, Ice Class SF1A exp. 2018. **Dwt: 8,212mt. Lt Displ: 2,700mt. 318' x 68.9' clear deck. Deck Load: 15MT/m2. Rake(s): ship bow. Bulkheads: 2 long'l / 8 transv. **Hold Capacity: 688,642ft3.** 1 hold. FO: 10.3m3. BW: 6,053m3. Pumps: Ballast: 2 - 500m3/h, Bilge: 1 - 40m3/h, Fire: 100m3/h. 2 - 2,475kg HHP Pool anchor(s). Wire/Chain Capacity: 495m. Wire/Chain Dia.: 50mm. Windlass: 2-Hyd. Norwinch anchor/mooring. Winch: 2 - 10T hydraulic Norwinch mooring. Genset(s): 2 - 145kW / CAT. **Articulated, ice-classed, bulk barge with articouple linkage.** Ice breaking ship shape bow with deep notch stern. 32' high bin walls with 318' x 68.9' interior acting as single, open-top hold. Cubic capacity Grain/Bale: 19,500m3 / 688,642ft3. Can load up-to 20MT/m2 on tank tops. Has carried abt. 28,000m3 wood cargo in past. 9.5m x 6m MacGregor-Navire side ramp can carry up to 85T max truck axle load. 430kW jet bow omni-thruster. Below deck pump & control room. **Well suited for project cargoes and bulk.****

Barge and matching articulated tug are available for sale. Extremely motivated owners. Drawings, deadweight scale, photographs, class status and price ideas for tug and barge available on request. **Canada East Coast.**

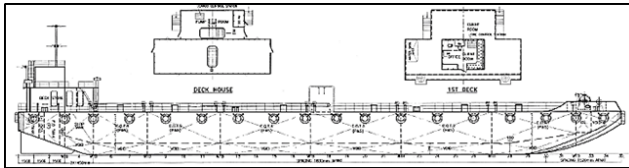
R = Rebuilt

See www.marcon.com for more listings.

Details believed correct, not guaranteed. Offered subject to prior sale or charter.



Featured Vessels & Barges For Sale



File: [TB13920](#) Double Hull Tank Barge - Ocean: 200.0' x 56.0' x 14.0'. Built in 2011 by Malaysian SY; Malaysia flag. GRT: 1,132. NRT: 607. NKK *NS* Barge, Tanker, Oils-Flashpoint +60deg. C. exp. 05/2021. D/D due 03/2019. **Dwt: 2,443T.** Rakes: Double. Bulkheads: 1 long'l/7 transv. FO: 24.2m³. FW: 17.1m³. Pumps: Cargo: 2-350m³/hr. FO: 2-40.3m³/hr. Fire: 1-300m³/hr. GS/Fire: 1-50m³/hr. 1,040kg stockless anchor. Windlass: 1-3.5T elec-hyd. Gensets: 2-50kW. **Designed to carry Palm Oil. 2,226m³ in 12 mid-body cargo tanks.** Slops: 44.90m³. 2,000PPH boiler. **Southeast Asia.**



File: [TB80007](#) Double Hull Tank Barge-Ocean: 336.0' x 322.2' x 74.0'. Built in 2008 by Bollinger SY; LA. U.S. flag. GRT/NRT: 4,228. ABS +A1, Oil/Chemical Tank Barge, Unrestricted exp. 10/2023. **Dwt: 11,794mt.** Rakes: Ship bow. Bulkheads: 6 transv. **Capacity: 80,000bbl.** Tanks: 10. Pumps: 2-BJ 12LS 16 GH 3-stage. BW: 2-BJ LS 16GH 1 stage. 6,000lb. Stockless anchors. Windlass: Coastal Marine. Crane: 2-1.1T Techcrane F10-50 hose. Winch: 2 Coastal Marine aft mooring, 2 fender hoist, 2 stern capstans. Gensets: 1-30kW. **Double hull barge for ATB operation.** Notched stern with **JAK 400K coupler.** Raised trunk. Cargo gauging overflow protection. Vapor recovery. Yokohama fender slides port fore & aft. Panama chocks. **U.S. Gulf Coast.**



File: [TG70136](#) Tug - Twin Screw: 135.1' x 38.0' x 20.0'. Built in 1975 by Astilleros del Atlantico; Spain. Rebuilt: 2001. Mexico flag. GRT: 721. ABS + A1, Ice C, Tow Service + AMS, Unrestricted exp 08/2020. Dwt: 824mt. FO: 190,000g. FW: 22,000g. Winch: Smatco 66DAW dbl drum / GM8V-71 powered. Line Pull: 200T. Wire: 2,200' 2.25" ea drum (max). Stern Roller. M/Es: 2 x EMD 20-645E7B total **7,200BHP.** 2 - FP props on 12" shafts. Kort nozzles. **BP: 80MT.** Speed about 13kn on 270gph. Gensets: 2 - 152kW. Quarters: 9. No Jones Act. Welded steel hull with model bow, raised foc'stle bow, rounded stern with roller, two level superstructure forward with upper pilothouse. SB shark jaws, SB dual tow pins. 14' x 4' stern roller. **U.S. Gulf Coast.**

Tank Barge Market Update, Cont'd.

the interest that we might have expected just a few years ago. Larger ATB units are also struggling to obtain charter rates to justify their expense. Unfortunately, the somewhat stagnant situation continues.

Looking at select third quarter earnings releases, owners are reporting that in the inland and coastal markets, day rates were flat or slightly up, while utilization remained flat. The inland market was still feeling the effects of excessive flooding earlier in 2019 and has been and will continue to be impacted by the U.S. - China trade dispute and competition from cheaper grain sources in South America. Corn and soybean export demand and sales for 2019 are down significantly from 2018. There is legitimate concern if we will see rebounds in these commodities in 2020.

Per the **U.S. Energy Information Agency's Short Term Energy Outlook** for December 2019, the International Maritime Organization's Sulphur restrictions (known as IMO 2020) become effective January 1st, 2020. The EIA is predicting that U.S. refinery runs will increase by 3% in 2020 with the upgrading of high-sulphur heavy fuel oil into low-sulphur distillate fuel. How much of this increase will be moved by tank barges versus pipeline remains to be seen.

According to **Colton Co.**, as of September 5, 2019, year-to-date one tank barge over 5,000GT and 100 under 5,000GT were delivered from U.S. shipyards. In 2018, three tank barges over 5,000GT and 76 under 5,000GT were delivered compared to eight over 5,000GT and 85 under 5,000GT in 2017 and nine over 5,000GT and 100 under 5,000GT tank barges delivered in 2016 from U.S. shipyards.

In 2019, Marcon sold or chartered 17 vessels and ten barges, including three ocean tank barges totaling 189,080bbl, a 16,800bbl inland tank barge and 13 tugs totaling 58,060BHP. In 2018, Marcon sold or chartered 41 vessels and barges, including six ocean tank barges totaling 945,000bbl and 22 tugs totaling 77,280BHP. Since 1981, Marcon International has closely followed the tug, barge and offshore petroleum markets with over 1,494 vessels and barges sold or chartered worldwide. Sales include 102 ocean tank barges totaling 8.175 million BBL capacity (abt. 1,104,725dwt), 64 inland tank barge total 1.048 million BBL capacity (abt. 141,574dwt), 361 tugs (1,158,747BHP), 240 ocean & inland ocean deck barges (1,098,973dwt), 127 hopper barges, four tankers (7,794dwt) and one 2,995dwt LNG/LPG carrier.

Full report is available here: [Tank Barge Report Oct 2019](#)

List Your Vessel / Barge With Marcon

We are interested in receiving information on any vessels or barges, inland or ocean service, available for sale or charter. Complete this [form](#) to list a single vessel. To list more than one, please [email](#) or call us at (360) 678-8880.

Details believed correct, not guaranteed. Offered subject to prior sale or charter.